


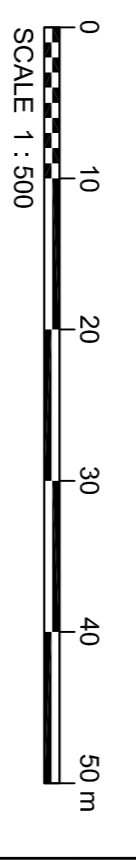
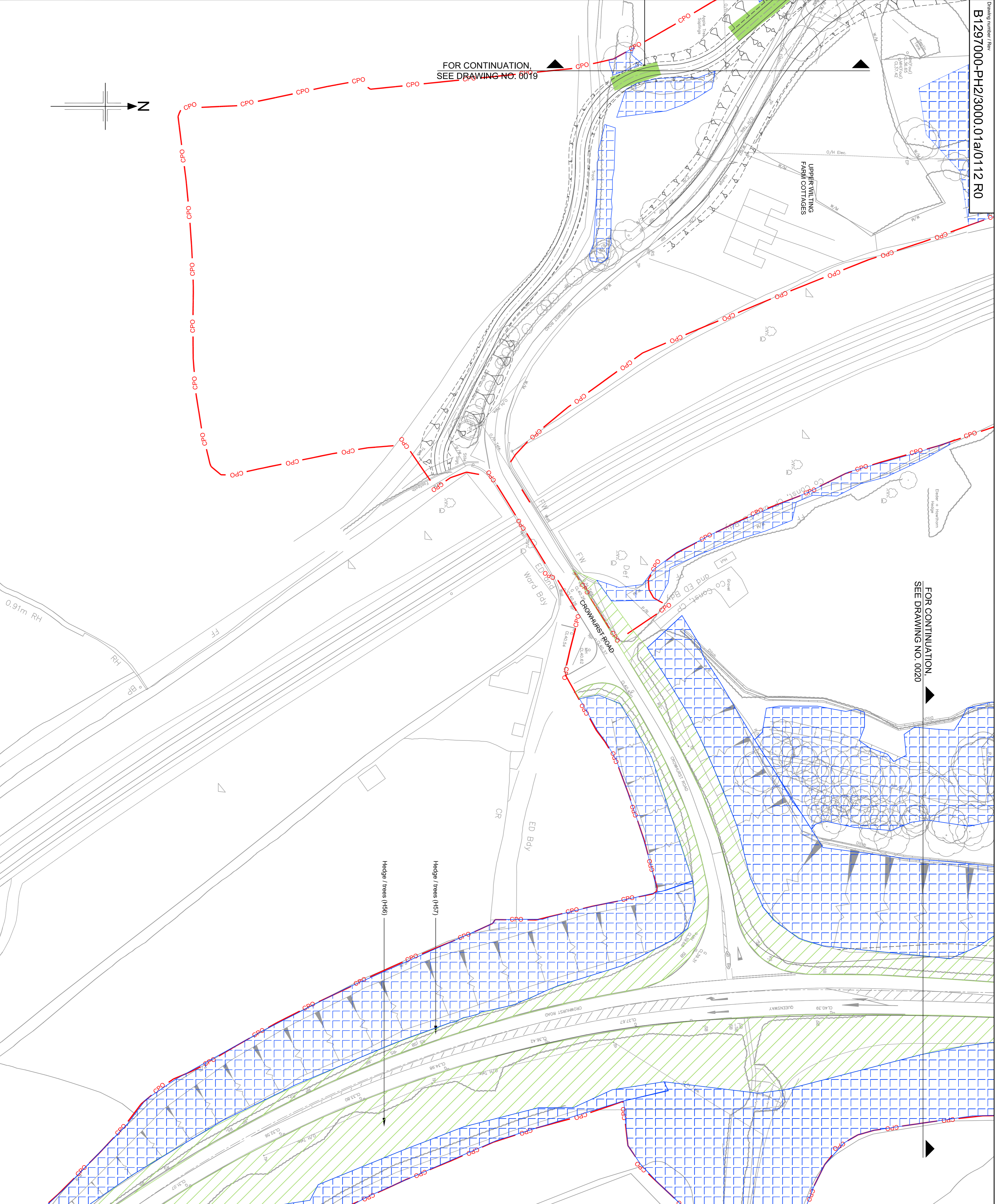


FOR CONTINUATION,  
 SEE DRAWING NO. 0020

FOR CONTINUATION,  
 SEE DRAWING NO. 0019

- KEY**
-  Area of managed vegetation to be retained shall be protected by temporary 2m high steel tube and wire mesh fence in accordance with BS 5837. Areas of management vegetation to be retained that are remote from the construction works may be protected by timber post and three wire fence.
  -  Area of Hedges, trees, fenceless and scrub
  -  Hedge rows and fence lines
- All items to be removed and taken to contractors storage off site unless otherwise stated.**



Reproduction from the Ordnance Survey Map with the permission of the controller of Her Majesty's Stationery Office Crown Copyright reserved Licence No. AL 100017326

<b>SAFETY, HEALTH AND ENVIRONMENTAL INFORMATION</b>	
In addition to the hazards/risks normally associated with the types of work detailed on the drawing, note the following:	
CONSTRUCTION	
MAINTENANCE / CLEANING	
DECOMMISSIONING / DEMOLITION	

It is assumed that all works will be carried out by a competent contractor working, where appropriate, to an approved method statement.

Rev	20/01/2013	INITIAL/ISSUE	ASC	RNS	SSG	RMD
Rev	Date	Purpose of revision	Drawn	Checked	Rev'd	Approved

Client: **JACOBS**  
 Employer: **HOCHTIEF TRAVELER**  
 Project: **BEXHILL TO HASTINGS LINK ROAD**

Drawing title  
**PLANNING CONDITION 14  
 VEGETATION CLEARANCE  
 SHEET 32 OF 35**

Drawing status	
<b>ISSUE FOR REVIEW</b>	
Scale	1:500 @ A1
Jacobs No.	B1297000-PH2
Client no.	DO NOT SCALE
Drawing number	B1297000-PH2/3000.01a/0112
Rev	R0

This drawing is not to be used in whole or part other than for the intended purpose and project as defined on this drawing. Refer to the contract for full terms and conditions.